

Govt. of India
Ministry of Human Resource Development
Dept. of School Education and Literacy
Mid Day Meal Division

PAB-MDM meeting
to consider and approve AWP&B 2018-19

(Date of the meeting: 23.05.2018)



APPRAISAL NOTE

State: Arunachal Pradesh

INDEX

Sl. No.	CHAPTER	Page no.
Overview	Pre-requisite steps for submission of AWP&B	2-3
	Main Issues from Appraisal	
	Best practices	
Part-A	General Information	4
Part-B	Review of performance during 2017-18	5-15
Part-C	Recommendations of Appraisal team and quantification of variables for central assistance during 2018-19.	16-18
Part-D	Analysis sheet.	19 onwards

Overview:

Status on Pre requisite steps required for submission of AWP&B

Pre-requisite step	Status
Plan should be approved by SSMC Meeting	Yes
Release of funds through e-transfer from State / District to at least 50% schools	Yes
100% payment of cost of food grains made to FCI	Yes
100% payment of honorarium to cook-cum-helpers through e-transfer to their bank accounts.	Yes
Annual and Monthly data entry for the FY 2016-17 should be completed up to December 2016.	Annual: 91% Monthly: 72%
Automated Monitoring system should have been operationalized	Not fully
Emergency Medical Plan on the lines of the contingency plan of Odisha.	Yes
Submission of Plan through MDM-MIS	Yes
Action plan for the testing of food samples, Number of food samples tested by accredited labs and findings	No reputed lab in the State
Separate and detailed MME plan	Yes
Plan submitted duly signed by the Pr. Secretary / Secretary of the State/UT within the scheduled date.	Yes

Best Practices:

1. Community of the villages rich in horticultural products supply fresh fruits like apples, oranges, bananas in nominal cost to schools to add delicacy to school's MDM menu.
2. School authorities have taken up to kitchen garden to grow vegetables in the school premises.

Issues:

1. Decline in enrolment and coverage of children.
2. Delay in release of funds (8 months) from State to school level.
3. Use of firewood as mode of cooking in 99% schools.
4. State has not fully operationalized the Automated Monitoring System (<1% schools).
5. Monthly data entry into MDM-MIS portal completed for only 72% schools.
6. Poor coverage under School Health Programme/RBSK (health check-up of only).

Issues as per Joint Review Mission (14th -21st December, 2017): Papum Pare and Lower Subansiri:

1. Huge number of interruptions in serving of meals.
2. False reporting of MDM served days and utilization of cooking cost and food grains.
3. No funds received at school level for FY 2017-18.
4. No payment of honorarium to CCH during FY 2017-18
5. Very poor inspection of schools by District and Block officials w.r.t. MDM
6. Irregular supply of food grains in Lower Subansiri district.
7. No payment made to FCI against the bills raised during FY 2017-18.
8. Kitchen sheds are either damaged or not usable or kuccha in most of the schools.
9. Prescribed Menu not followed; Only kichri is prepared as MDM.
10. Cooked amount as per number of children is less and serving size is also less
11. Ignorance of entitlements of the children by the cook.

Part-A : General Information

Introduction:

In Arunachal Pradesh, the MDM Scheme covers all children enrolled in Primary and Upper Primary level. The MDM Programme was first launched in the State on 15th August, 1995 in five districts with the rest of States of Indian Union. Initially only raw rice was provided to the children, but from 2003-04 onwards, in addition to food grains, the Central Government began to provide two other major components, viz. cost of cooking and provision of essential infrastructure in order to serve hot cooked meals to the children as per the Directives of the Hon'ble Supreme Court of India. The programme seeks to address two of the most pressing problems for the majority of the school children viz. hungry and education by:

- Improving the nutritional status of children of class I-VIII in Government, Local Body and Government Aided Schools and Special Training Centers (STC) and Community Schools (CS);
- Encouraging poor children belonging to disadvantaged section (ST/SC), to attend school more regularly and help them to concentrate on class-room (activities by eliminating class-room hunger);
- Providing nutritional support to Primary stage in drought affected areas during summer vacation;
- Fostering equality among the different socio-economical groups and narrow the gender gap.

1. Basic Information:

(Year 2017-18)

S. No.	INDICATORS	STATUS		
		PRY	U PRY	TOTAL
1. No. of Institutions				
i)	Existing Institutions	2010	1172	3182
ii)	Covered during the year	1814	1120	2934
2. No. of Children				
i)	Approved by MDM-PAB	126893	66175	193068
ii)	Enrollment as on 30.9.2017	120360	62207	182567
ii)	Average No. of children availed MDM during 01.04.2017 to 31.03.2018	115005 *[96%]	60451 *[97%]	175456 *[96%]
3. Coverage of children as per Quarterly Progress Report (QPR)				
i)	Average no. of children availed MDM as per QPR-1	122408	66848	189256
ii)	Average no. of children availed MDM as per QPR-2	120678	63666	184344
iii)	Average no. of children availed MDM as per QPR-3	111729	59013	170742
iv)	Average no. of children availed MDM as per QPR-4	104165	54195	158360
4. No. of Working Days				
i)	Approved for 4 quarters	220	220	
ii)	Covered during 4 quarters	218	218	
5. Per unit cooking cost Per child per day (in Rs.)				
AVERAGE UNIT COOKING COST PCPD		4.13	6.18	
State's contributions in cooking cost per child per day		0.41	0.62	

*percentage to enrollment.

Part-B : Review of Performance in 2017-18 (01.04.17 to 31.03.2018)

2. Based on the information provided by the State administration in its AWP&B 2018-19, the performance during 2017-18 (01.04.17 to 31.03.2018) was reviewed. The major issues in implementation during 2017-18 are summarized as under: -

2.0 Coverage of Institutions

Coverage in terms of no. of institutions.

Difference between Existing Institutions Vs No. of institutions covered (Achievement) –

i) PRIMARY

The number of existing institutions	= 2010
Number of institutions covered during 01.04.17 to 31.03.18	= 1814 (90%)

ii) UPPER PRIMARY

The number of existing institutions	= 1172
Number of institutions covered during 01.04.16 to 31.12.16	= 1120 (96%)

2.1 Coverage of Children

2.1.1 Coverage against enrolment :

a) Primary - Coverage in terms of No. of children. Difference between Enrolment vs. Average No. of Children Aailed MDM (Achievement) (Refer Table 2.4 of the Analysis Sheet).

Total Enrolment as on 30.09.2017	= 120360
Average number of children aailed MDM during 01.04.17 to 31.03.18	= 115005 (96%)

The coverage at State level is well above the national average of 76%.

b) Upper Primary: Coverage in terms of No. of children. Difference between Enrolment vs. Average No. of Children Aailed MDM (Achievement) – (Refer Table 2.5 of the Analysis Sheet).

Total Enrolment as on 30.09.2017	= 62207
Average number of children aailed MDM during 01.04.17 to 31.03.18	= 60451 (97%)

Coverage of children at upper primary level in the State is well above the national average of 76%.

2.1.2 Coverage against PAB-MDM approval :

a) Primary : Coverage in terms of No. of children. Difference between PAB Approval (Target) vs. Average No. of Children Availing MDM (Achievement)
(Refer Table 2.2 of the Analysis Sheet).

The number of children approved by MDM PAB for 2017-18 = 126893
Average number of children availed MDM during 01.04.17 to 31.03.18 = 115005 (90%)

b) Upper Primary: Coverage in terms of No. of children. Difference between PAB Approval (Target) Vs Average No. of Children Availing MDM (Achievement)
(Refer Table 2.3 of the Analysis Sheet).

The number of children approved by MDM PAB for 2017-18 = 66175
Average number of children availed MDM during 01.04.16 to 31.12.16 = 60451 (91%)

2.1.3 No. of Meals: Difference between No. of meal to be served (Target) Vs. No. of meals Served (Achievement) - PY+U PY (Refer Table 2.6 & 2.7 of the Analysis Sheet).

The number of meals to be served during 01.04.17 to 31.03.18 = **4.25 Crore**
The number of meals served during 01.04.17 to 31.03.18 = **3.82 Crore (90%)**

2.2 FOODGRAINS (PRIMARY + UPPER PRIMARY)

2.2.1 Level of Opening Balance as on 01.04.17: (Refer Table 3.2 of the Analysis Sheet).

The State had opening balance of 1344.71 MTs (27%) only against the total allocation as on 1.4.17.

2.2.2 Level of unspent balance as on 31.03.18: (Refer Table 3.3 of the Analysis Sheet).

The State level closing balance as on 31.03.18 is 491.81 MTs (10%) against the total allocation of 4975.43 MTs.

2.2.3 Availability of Food grains: (01.04.17 to 31.03.18) : (Refer Table 3.5 of the Analysis sheet)

State level availability as on 31.12.16 was 99% of the total allocation.

2.2.4 Utilization of food grains: (Refer Table 3.7 of the Analysis sheet)

An analysis of the utilization of food grains during 2016-17 shows that State has utilized 90% of the allocated food grains.

6.2.5 Payment of cost of foodgrains to FCI: (Refer Table 3.9 of the Analysis sheet)

The FCI has submitted bills for Rs. 108.92 lakhs during 1.4.2017 to 31.03.2018 towards cost of food grains. As per information provided by the State Government, State has made payment for only Rs. 108.92 lakhs (100%) to the FCI.

2.3 COOKING COST (PRIMARY + UPPER PRIMARY)

2.3.1 Level of Opening balance as on 01.04.17: (Refer Table 4.2.1 of the Analysis Sheet)

The State had reported opening balance of Rs. 148.16 lakhs (7%) at the beginning of the financial year 2017-18 against allocation of Rs. 2052.66 lakhs.

2.3.2 Level of closing balance as on 31.03.18: (Refer Table 4.2.2 of the Analysis Sheet)

The State had closing balance of Rs. 202.91 lakhs (10%) towards cooking cost as on 31.03.18.

2.3.3 Utilization of Cooking cost: (Refer Table 4.5 & 4.6 of the Analysis Sheet)

State level utilization is Rs. 1849.8 (90%) against allocation.

2.4 Reconciliation of utilisation and performance during 2017-18 (1.4.17 to 31.03.18)

2.4.1 Mismatch in utilization of Food grains vis-à-vis cooking cost: (Refer Table – 5.1 of Analysis Sheet)

Ideally the percentage utilization of cooking cost and food grains should tally with each other. The data furnished in the AWP&B reveals that there is no mismatch at State level in utilization of cooking cost (90%) and food grains (90%).

2.5 Cook-Cum-Helper (PRIMARY + UPPER PRIMARY):

MDM-PAB had approved 6749 cook-cum-helpers to be engaged during 2017-18 in the State, the State has engaged 6525 (97%) cook-cum-helpers. The State has utilized 97% of the allocated funds for payment of honorarium to cook cum helper. (Refer Table – 6.2 of Analysis Sheet).

2.6 Utilization of MME (Refer Table – 7.3 of Analysis Sheet)

Against the allocation of Rs. 47.56 lakh as Central Assistance towards MME funds, the State has utilized Rs. 47.86 lakh (100%).

2.7 Utilization of Transportation Assistance (Refer Table – 8.1 & 8.2 of Analysis Sheet)

Against the allocation of Rs. 129.36 lakhs towards Central Assistance towards funds for Transportation Assistance, the State has utilized Rs. 94.39 lakhs (73%).

2.8 Construction of Kitchen-cum-stores (Reference Table -9.1.2 of Analysis Sheet)

Central assistance of Rs. 2450.87 lakhs has been released for construction of 4085 Kitchen-cum-Stores during 2006-07 to 2016-17. The State Government has constructed 4084 (99.9%) kitchen-cum-stores as on 31st December, 2016. GOI also released an amount of Rs. 44 lakhs for construction of 46 kitchen sheds which was later on revalidated for replacement of kitchen devices in 880 schools as the kitchen sheds were in excess.

2.9 Procurement of Kitchen devices (Reference Table -9.2.2 of Analysis sheet)

Central assistance of Rs. 423.19 lakhs (including Rs. 44 lakh revalidated for 880 kitchen devices) has been released towards procurement of 8464 (4431 new + 4033 replacement) units of kitchen devices during 2006-07 to 2017-18. State has procured 100% units as on 31st March, 2018.

3. Data Entry Status on the MIS Web Portal

For smooth functioning of MDMS, Ministry of HRD, MDM Division has developed web based monitoring system i.e. MDM-MIS in collaboration with NIC. In this web portal State/District/Block users have to make Annual and Monthly data entry. The State should monitor that the data is entered in timely manner by District/Block users into the portal. The Annual and monthly data entry status of the State is given below:-

3.1 Annual Data Entry:

It is appreciated that State has completed 91% annual data entry for the year 2017-18. The district wise annual data entry status is given below:-

FY-2017-18					
Annual Data Entry Status_ARUNACHAL PRADESH					
S. No.	District	Total Schools	Completed(Saved)	Pending	% Completed
1	ANJAW	81	81	0	100%
2	CHANGLANG	289	289	0	100%
3	DIBANG VALLEY	44	44	0	100%
4	EAST KAMENG	282	282	0	100%
5	EAST SIANG	203	203	0	100%
6	KURUNG KUMEY	327	327	0	100%
7	LOHIT	286	286	0	100%
8	LOWER DIBANG VALLEY	70	70	0	100%
9	LOWER SUBANSIRI	276	261	15	95%
10	PAPUM PARE	309	29	280	9%
11	TAWANG	116	116	0	100%
12	TIRAP	218	218	0	100%
13	UPPER SIANG	100	100	0	100%
14	UPPER SUBANSIRI	239	239	0	100%
15	WEST KAMENG	215	215	0	100%
16	WEST SIANG	317	317	0	100%
	Total	3372	3077	295	91%
Source: www.trgmdm.nic.in as on 17 May'18 till 12:00 hrs					

*Number of the districts have increased in the State, the same will be updated in MIS once the requisite information is received from the State.

3.2 Monthly data entry

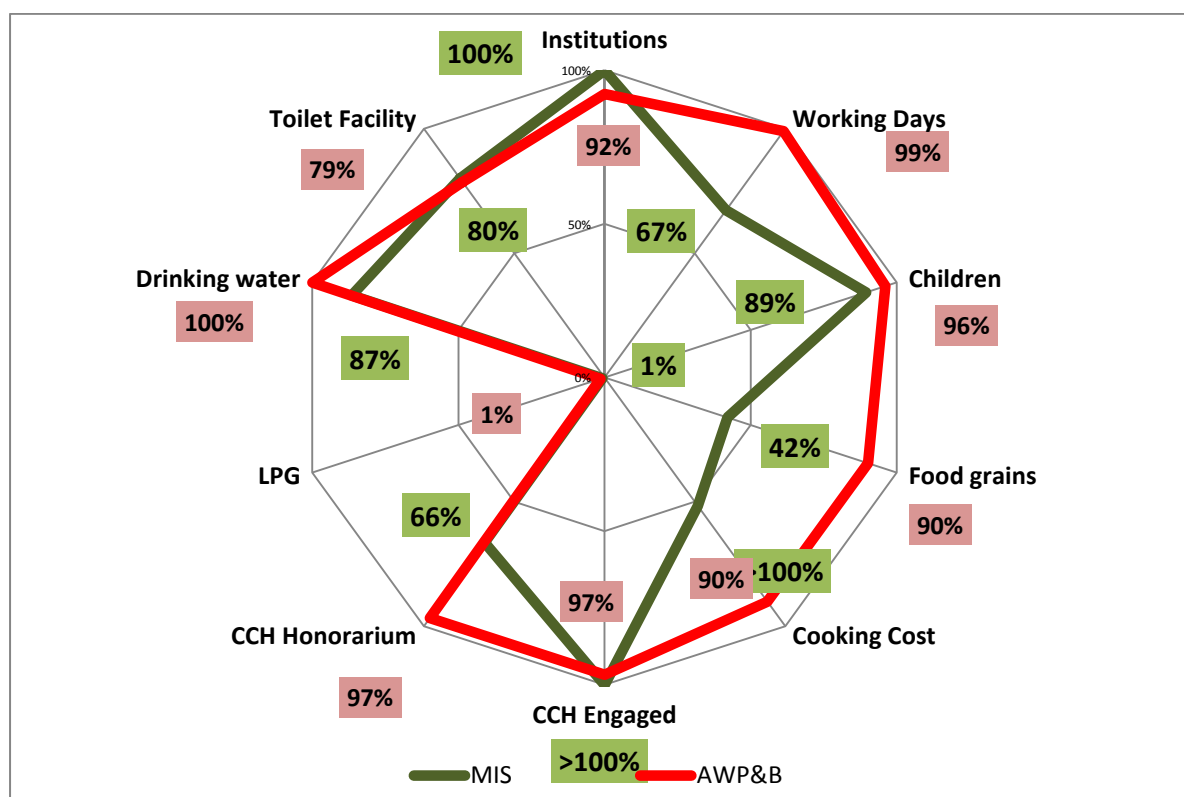
Average monthly data entry status up to March, 2018 at State level is 72%. The details of district wise monthly data entry status are placed below:

FY 2017-18															
Monthly Data Entry Status_ARUNACHAL PRADESH															
S. No.	District	Total Schools	% April	% May	% June	% July	% Aug	% Sept	% Oct	% Nov	%Dec	Jan%	Feb %	Mar %	Average %
1	ANJAW	81	100%	100%	100%	100%	100%	100%	100%	100%	100%	100%	100%	100%	100%
2	CHANGLANG	289	100%	100%	100%	9%	9%	8%	0%	0%	0%	0%	0%	0%	27%
3	DIBANG VALLEY	44	61%	61%	61%	61%	61%	61%	61%	61%	61%	59%	59%	59%	61%
4	EAST KAMENG	282	100%	100%	100%	100%	100%	100%	100%	6%	6%	0%	0%	0%	59%
5	EAST SIANG	203	94%	94%	94%	94%	94%	94%	94%	94%	94%	94%	92%	77%	92%
6	KURUNG KUMEY	327	98%	98%	98%	98%	98%	98%	98%	98%	98%	50%	50%	50%	86%
7	LOHIT	286	100%	100%	100%	100%	100%	100%	100%	100%	100%	73%	54%	0%	86%
8	VALLEY	70	100%	100%	100%	100%	100%	100%	100%	100%	100%	100%	100%	100%	100%
9	SUBANSIRI	276	95%	95%	95%	95%	95%	95%	95%	95%	95%	63%	63%	63%	87%
10	PAPUM PARE	309	0%	0%	0%	0%	0%	0%	0%	0%	0%	0%	0%	0%	0%
11	TAWANG	116	100%	100%	100%	100%	100%	100%	100%	100%	100%	0%	0%	0%	75%
12	TIRAP	218	100%	100%	100%	100%	100%	100%	100%	100%	100%	39%	39%	39%	85%
13	UPPER SIANG	100	100%	100%	100%	100%	100%	100%	100%	100%	100%	87%	86%	59%	94%
14	UPPER SUBANSIRI	239	100%	100%	100%	100%	100%	100%	100%	100%	100%	100%	100%	100%	100%
15	WEST KAMENG	215	100%	100%	100%	100%	100%	100%	100%	100%	100%	100%	86%	32%	93%
16	WEST SIANG	317	93%	93%	93%	93%	93%	93%	93%	93%	93%	48%	10%	10%	75%
	Total	3372	89%	89%	89%	81%	81%	81%	80%	72%	72%	50%	44%	34%	72%
Source: www.trgmdm.nic.in as on 17 May'18 till 12:03 hrs															

3.3 Mismatch in Data from MIS and AWP&B

COMPONENT	MIS	AWP&B
Institutions	3372	2935
Working Days	148	218
Children	163382	175456
Food grains (In MTs)	2093.09	4483.60
Cooking Cost (Rs. in lakhs)	1059.59	1849.76
CCH Engaged	7380	6525
CCH Honorarium (Rs. in lakhs)	448	652.5
LPG	22	44
Drinking water	2754	3182
Toilet Facility	2548	2503

The graphical representation of the differences in data from MDM-MIS and as submitted by the State through Annual Work Plan & Budget is given below:



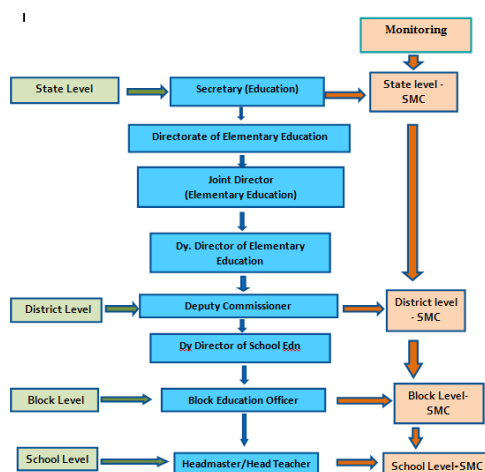
The State should take appropriate measures to reconcile the data accordingly.

4. Release of funds

The Govt. of India released ad-hoc grant on 03/05/2017, balance of first installment on 17/07/2017 and 2nd installment on 28/03/2018. As per the information provided by the State, adhoc grant was received at school level on 20/01/2017 (8 months delay), balance of first installment on 25/03/2018 (8 month delay).

Till 2016-17, the mode of release of fund under Mid Day Meal Scheme was through Government Treasury mode. From 2017-18, the mode of release of fund is through Direct Benefit Transfer (DBT) under Public Financial Management System (PFMS). With the introduction of this system, transfer of funds at all level is made through e-transfer through PFMS system. Further all payments are made through account payment. It is expected that in coming years the fund flow to the schools will be smoother and less time consuming.

5. Management Structure



6. System for payment of cost of foodgrains to FCI

The payment of cost of foodgrains towards FCI bills is made at State level instead of payment at district level. This helps the department to make uniform payment of cost of foodgrains in time. There is regular meeting between the District Nodal Officers and FCI for lifting of food grains in time. District Nodal Officers are submitting reports on regular basis after lifting of food grains from FCI godown.

7. Menu

Weekly menu- day wise (Suggestive)

Sl.No	Day	Menu
1	Monday	Rice, Dal, Green vegetables
2	Tuesday	Khichri with green leafy vegetables

3	Wednesday	Rice, Dal, Green vegetables, fruit
4	Thursday	Khichri with green leafy vegetables
5	Friday	Rice, Dal, Green vegetables, fruit
6	Saturday	Khichri with green leafy vegetables

Fruits such as orange, apple, banana, pineapple etc are provided occasionally as these are seasonal.

8. Community involvement

The MDM programme has reached out to most remote areas even near international borders with a significant scale of community participation in the programme implementation. Even community of the villages rich in horticultural products especially, in West Kameng, West Siang, Upper Siang, East Siang and Lohit districts used to supply fresh fruits like apples, oranges, bananas in nominal cost to schools where production of such items are available seasonally to add delicacy to school's MDM menu.

9. Capacity Building

All Deputy Directors of School Education and District Coordinators (MDM) of 20 districts was given capacity building and orientation training programme on community mobilization in regard to implementation of the flagship programme of Mid Day Meal at Itanagar on 3rd- 5th August, 2015 focusing on maintenance of transparency/accountability and on monitoring and inspections. About 60 Block Education Officers (BEOs) have been imparted training as key resource persons at district/block/school level on management and training of cooks-cum-helpers in areas of safety and sanitation and personal hygiene. The cooks-cum-helpers engaged in cooking mid day meals in schools were imparted basic training on cooking process/procedures/ health & hygiene and safety measures at block/cluster levels by the educational functionaries of the Dy Director and District Coordinators of the districts. 05- days State level workshop on preparation of Annual Work Plan & Budget (MDM), 2017-18 was held w.e.f. 17th – 21st January, 2017 at State Council for Educational Research and Training (SCERT) at Itanagar in which District Coordinators and Data Entry Operators of 20 districts attended the workshop. The district educational functionaries are required to conduct trainings of the community leaders, members of school management committees on community participation in the implementation of the scheme in order to create awareness among common people of villages to involve in activities under mid day meal scheme.

10. Tasting of Meal

As per information provided by the State Government, a committee is constituted with the following members at school level to undertake the tasting of food/meals before serving it to the children on daily basis:

i.	Headmaster/Principal	:	Chairman
ii.	A teacher to be nominated by HM	:	Member
iii.	A member of SMC	:	Member
iv.	A Cook	:	Member

The members must taste the food/meals before serving it to the students every meal day and reports on tasting of meals are recorded in the school meal register. It will conduct meeting monthly to review the implementation aspects.

11. Grievance Redressal Mechanism

Grievance Redressal Cell is set up in the office of district education officer and Deputy Director of School Education (DDSE) is nominated as District Grievance Redressal Officer and District Coordinator (MDM) as Coordinator of GR. Joint Director of Elementary Education (MDM) is nodal officer for GR at state level who will be assisted by State Coordinator. [Toll Free Number installed at State Nodal office: 18003453604. Dedicated Number: 0360 – 2292061]

12. Contingency Plan to avoid any untoward incident

An emergency medical contingency plan has been put in place to prevent happenings of untoward incidents like one happened in Bihar with convergence with the health department.

Instructions have been issued from time to time to all Deputy Commissioners/ District Education Officers to ensure compliance with guidelines on dos and don'ts to avoid mid-day meal mishap at any time across the district.

Monitoring

- More pro-active in monitoring and supervision, holding of quarterly District Vigilance & Monitoring Committee meeting, monthly review meeting, regular school visits and checking of the mid day meals by authorities will ensure quality of mid day meal as well as enabled everybody aware and awake.
- More active community participation of parents, PRI members, etc. through School Management Committee will ensure safety, quality and regularity aspects.

Health and Hygiene

- Maintaining individual hygiene and cleanliness and practices of hand wash by children; and
- Supplementation of Iron Folic Acid for anemia control measures will ensure to safeguard children's health and life.

Emergency Help Lines

It is mandatory to display the telephone numbers of important officers in every school visible to all to use at emergency situations at all levels:

- The important contact/telephone numbers of Deputy Commissioner, Additional Deputy Commissioner, Superintendent of Police, Deputy Director of School Education, District Medical Officer, District Civil Hospital, Ambulance Services and Director of Elementary Education are to be reflected in the wall of the District Education Offices/Deputy Director of School Education office.
- The important contact/telephone numbers of Deputy Commissioner, Additional Deputy Commissioner, Superintendent of Police, Deputy Director of School Education, District Medical Officer, District Civil Hospital, Ambulance Services, Sub-Divisional Office, Block Education office, Public Health Centers are to be reflected in the wall of the Block Education Office.
- The important contact/telephone numbers of Deputy Commissioner, Additional Deputy Commissioner, Superintendent of Police, Deputy Director of School Education, District Medical Officer, District Civil Hospital, Ambulance Services, Sub-Divisional Office, Circle Officer, Block Education office, Public Health Centers, Headmaster, and Chairman School Management Committee are to be reflected in the wall of concerned school.

Precautions:

Despite of pre-caution, if any untoward incident happens immediately the following steps are to be taken by the District Authority/School Authority to save the health and the lives of the children.

- If cooked food found to be contaminated, poisoned or stale shall not be given to the children but it shall be buried underground.
- Unusable ingredients/rice that have caused food poisoning may be destroyed in presence of district administration/competent authority.
- Sample of the food may be sent to the health department for laboratory testing.
- Always use edge - marked oil, turmeric, etc in cooking food.
- Cooked food must be tasted by the headmaster, SMC member/ cook cum helpers before 30 minutes ahead of serving to the children.
- Any student complaining nausea/vomiting after consuming meal shall immediately be taken to the nearest hospital for treatment.
- Fire extinguisher shall be installed preferably near the kitchen.
- The telephone numbers of nearest Primary Health Center, Hospital, Police Station, Fire Station, Ambulance, Deputy Commissioner /Dy. Director of School Education are to be written in the wall of the school prominently for emergency help.

- Fast- Aid training needs to be imparted to the teachers, students and cooks and a Fast-aid kit is to be always available in the school for emergency use.
- Mid day meals shall be served to the children under the supervision of the teachers.
- Water used for cooking and drinking shall be potable .
- Students practise hand wash before and after eating meals.
- Kitchen cum stores need to be kept hygienic and food items stored in a covered container.

13. Social Audit

Conducting of Social Audit by reputed organisation has not been undertaken. However, School Management Committee(SMC) in some of the schools are undertaking social audit of MDM scheme in their respective locality.

--oOo--

Part-C : Recommendations of Appraisal Team for 2018-19

S. No.	Component	PAB Approval 2017-18	Proposal for 2018-19	Recommendations by appraisal team
1	Institutions			
1.1	Primary	2197	2010	2010
1.2	Upper Primary	1214	1172	1172
2	Children			
2.1	Primary	126893	115005	115005
2.2	Upper Primary	66175	60451	60451
2.3	NCLP	-	-	-
3	Working Days			
3.1	Primary	220	220	220
3.2	Upper Primary	220	220	220
3.3	NCLP	-	-	-
4	Cook cum Helpers			
4.1	Primary	6749	6525	6525
4.2	Upper Primary			
5	Non Recurring			
6.1	Kitchen cum Store	Nil	Nil	Nil
6.2	Kitchen Devices	Nil	Nil	Nil
6.3	Kitchen Devices (Replacement)	Nil	Nil	Nil

State: Arunachal Pradesh

QUANTIFICATION OF CENTRAL ASSISTANCE FOR 2018-19

A. Food grains

Sl. No.	Stage	No. of Children	No. of Working days	Quantity in MTs.
1	Primary (@ 100 gms per child per school day)	115005	220	2530.11
2	Up. Primary (@150 gms per child per school day)	60451	220	1994.88
3	NCLP (@150 gms per child per school day)	0		
4	Drought	0		
4.1	Primary	0		
4.2	Upper Primary	0		
TOTAL		175456		4524.99

B. Cost of Foodgrains, Cooking cost, Transport Assistance, Hon. to cook-cum-helpers and Management Monitoring and Evaluation (MME)

Sl. No.	Component/norm	Amount admissible
		(Rs. in lakh)
1	2	3
Primary		
1	Cost of Food grains @ Rs. 3000/- per MT for 2530.11 MT rice	75.90
2	Unit Cooking Cost- Rs. 4.13 per day / per child for 115005 children for 220 days	
2.1	Central Share @ Rs. 3.72 per child per day	941.20
2.2	Minimum Mandatory State Share @ 0.41 per child per day	103.73
3	Transportation Cost @ Rs 2600 Per MT food grains (115005 x 220 days x 0.0001 MT x Rs.2600)	65.78
4	Honorarium for cook cum Helper (Primary and Upper Primary)	
4.1	Central Share - (6525 x Rs.900x 10 months)	587.25
4.2	Minimum Mandatory State Share - (6525 x Rs. 100 x 10 months)	65.25
5	Management Monitoring and Evaluation (MME) @ 1.8% of the i) Cost of food grains ii) Cooking cost iii) Cost of transportation and iv) Honorarium to cook – cum-helpers	30.06
TOTAL - {1+2.1 +3+4.1+5}		1700.20
Upper Primary		

6	Cost of Foodgrains @Rs. 3000/- per MT for 1994.88 MT rice	59.85
7	Unit Cooking Cost 6.18 per day / per child for 60451 children for 220 days	
7.1	Central share @ Rs.5.56 per child per day	739.44
7.2	Minimum Mandatory State Share @ Rs.0.62 per child per day	82.46
8	Transportation cost @ Rs. 2600 Per MT food grains (60451 x 220 days x 0.00015 x 2600)	51.87
9	Honorarium to cook cum Helper (Included in Primary)	
10	Management Monitoring and Evaluation (MME) @ 1.8% of the 1) Cost of food grains 2) Cooking cost 3) Cost of transportation and 4) Honorarium to cook - cum-helpers	15.32
	TOTAL - {6+7.1 +8+9.1+10}	866.47
	Grand Total (Primary + Upper Primary)	2566.67

C. Drought : NIL

D. Non-recurring : NIL

E. Total Requirement of Funds for 2018-19

(Rs. in lakh)

Component		As per existing norms	
		Centre	Minimum mandatory State share
Recurring	Normal	2566.67	251.44
	Drought	0	0
Non- recurring		0	0
Total		2566.67	251.44

--oOo--